



# ***Bicycle-Engines***

**406-586-5970 • [www.Bicycle-Engines.com](http://www.Bicycle-Engines.com)**



## ***Are You Still Pedaling?***

***Motorize your bicycle - it's fun, safe, and economical!***



# 80cc/66cc 2-Stroke Complete Kits

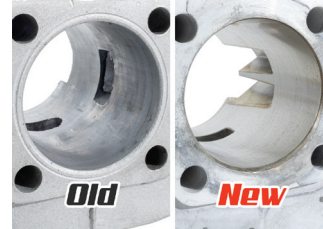


## **FIRESTORM** ZEDA80 Engine Kits

### **ZEDA80 New Cylinder Design!**

- Ceramic Coated Cylinder Walls - Reduced resistance and friction coefficient dramatically improves engine wear while providing excellent high temp performance increasing power and the longevity of your engine!
- Open Transfer Ports - increases performance with reduced piston & ring drag and enhanced air flow while improving wear and lubrication!
- Improved Intake & Exhaust Ports - higher flow area equals more power!
- Improved Magneto - extra coiling for a stronger more consistent spark!

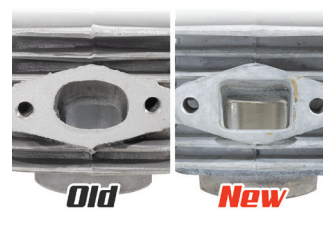
#### **Ceramic Coated Cylinder Walls**



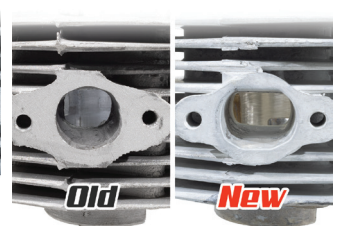
#### **Open Transfer Ports**



#### **Improved Intake Port**



#### **Improved Exhaust Port**



### **ZEDA Triple 40 Engine Features**

- Long 89mm Rod - increases engine power density and scavenging efficiency!
- Long 40mm Stroke Crank - improved power density, efficiency and reliability!
- Wide 40mm Intake Port & Circle Shaped Exhaust Port -
- Higher flow area equals more power!
- 60% Thicker Main Bearing Case -
- Improves performance, reduces engine vibration, and improves reliability!

#### **EACH KIT INCLUDES:**

- ZEDA80 2-Stroke 80cc/66cc Engine
- 2.0+ HP @ 6000 RPM
- Pedal Start with CDI Ignition
- 0.5 Gallon Black Fuel Tank
- Twist Throttle With Engine Kill Switch
- Improved Gas Valve and Gas Filter
- Standard NT Carburetor
- Needle Bearings On Piston Wrist Pin
- Quick Release Clutch Lever
- All mounting brackets, gaskets, hardware
- Wide frame mounting for bikes with large down tubes
- 6 Month limited warranty

### **415 CHAIN DRIVE KIT**

**\$169.99** ITEM: ENGJL-CES(36/44/48)



#### **CHAIN DRIVE OPTION:**

- 36, 44, or 48 Tooth Rear Drive Sprocket
- 11 Tooth Drive Sprocket
- 415 Heavy Duty Chain with Chain Guard
- Standard Ball Bearing Chain Tensioner
- Standard Rag Joint Sprocket Attachment Kit

### **T-BELT DRIVE KIT**

**\$189.99** ITEM: ENGJL-CESTB



#### **T-BELT DRIVE OPTION:**

- 190mm CNC Aluminum Rear Drive Pulley (50T equiv.)
- 39mm CNC Aluminum Drive Pulley (11T equiv.)
- 5M-1350 T-Belt
- CNC Aluminum T-Belt Tensioner
- Standard Rag Joint Sprocket Attachment Kit

#### **T-Belt Kit Features**

- Reduced Noise: no noisy chain and sprockets!
- Less Maintenance: no rusting & no lube required!
- Improved Performance: lighter weight = more torque!

More parts & accessories available at [www.Bicycle-Engines.com](http://www.Bicycle-Engines.com)

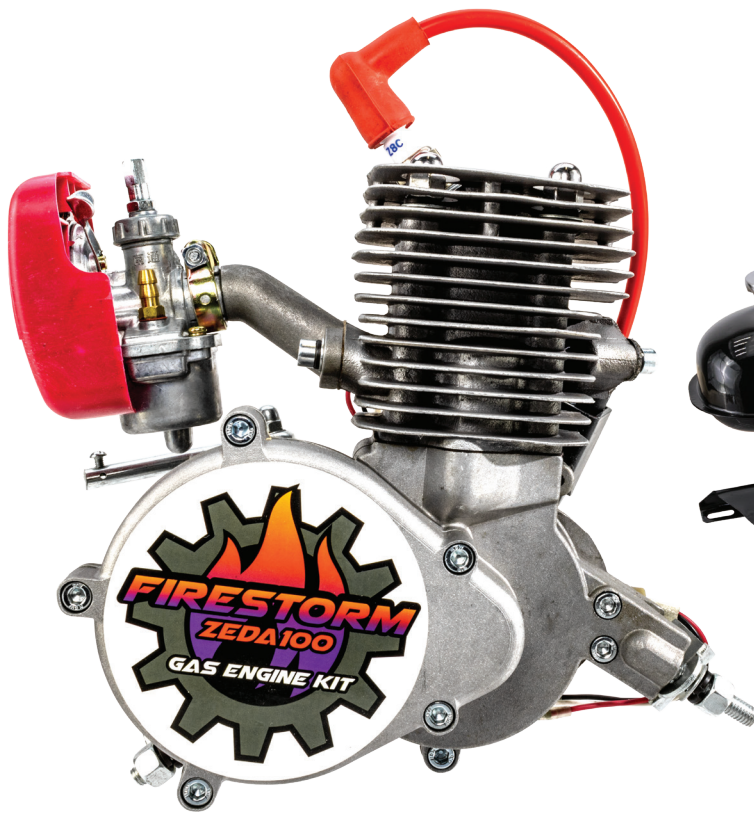


# 100cc/80cc 2-Stroke Complete Kit

## **FIRESTORM ZEDA100**

100cc/80cc 2-STROKE KIT

**\$199.99**



### **ZEDA100 Upgrades!**

- 50 mm Bore Diameter
- One-Piece Cylinder
- Grade 8.8 hardware
- Upgraded CDI
- High Airflow Carburetor

### **KIT INCLUDES:**

- ZEDA80 2-Stroke 100cc/80cc\* Engine
- 3.0+ HP @ 8,000 RPM
- Pedal Start with Upgraded CDI Ignition
- 36, 44 or 48 Tooth, Rear Drive Sprocket
- 2 Plate Sprocket Attachment Kit
- 0.5 Gallon Black Fuel Tank
- Twist Throttle With Engine Kill Switch
- Improved Gas Valve and Gas Filter
- Standard Ball Bearing Chain Tensioner
- Upgraded Speed Carburetor
- Needle Bearings On Piston Wrist Pin
- 415 Heavy Duty Chain with Chain Guard
- Quick Release Clutch Lever
- All mounting brackets, gaskets, hardware
- Wide frame mounting for bikes with large down tubes
- 6-Month Limited Warranty Included - FREE

\* Actual U.S. displacement 78.6cc



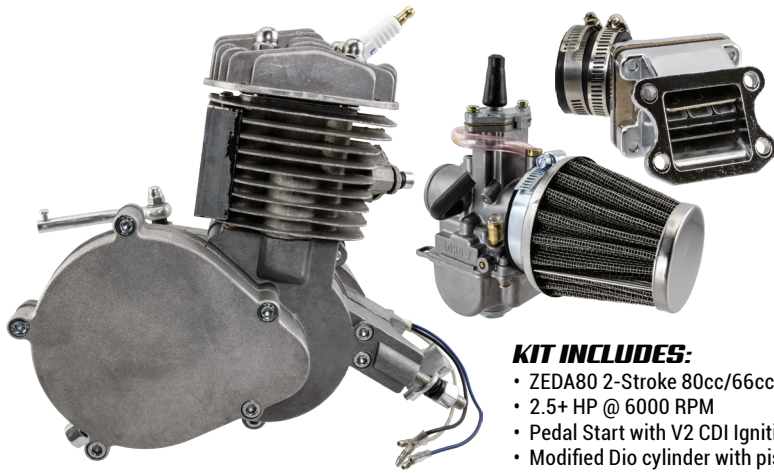
More parts & accessories available at [www.Bicycle-Engines.com](http://www.Bicycle-Engines.com)



# Performance 2-Stroke Complete Kit

## ZEDA80 DIO

80cc/66cc 2-STROKE PERFORMANCE KIT  
**\$219.99**



### KIT INCLUDES:

- ZEDA80 2-Stroke 80cc/66cc Engine
- 2.5+ HP @ 6000 RPM
- Pedal Start with V2 CDI Ignition
- Modified Dio cylinder with piston
- Enhanced balanced crank with stuffed crankcase
- Upgraded bearings + 60% thicker crankcase support
- Large intake port and round exhaust port
- Long rod with 40mm crank stroke
- High wrist pin piston
- 6 flap Dio reed valve
- 21mm OKO flat side carb with 3 jets
- K&N style mesh air filter



- ½ Gal. Fuel tank w/fuel cap, fuel valve, fuel filter, and fuel line
- 36 or 44 Tooth, rear drive sprocket
- 2 Plate rear sprocket attachment kit
- Chain guard, 415 heavy duty chain, and ball bearing chain idler
- Standard chrome muffler
- Twist throttle with engine kill switch
- New quick release clutch handle
- Large front mount for bicycles that have large down tubes
- Spark plug socket tool and gear removal tool
- Standard ball bearing chain tensioner
- All mounting hardware and gaskets
- 6-Month limited warranty

### Dio Upgrades!

- Dio Cylinder with CNC block
- Dio Reed Valve
- OKO Carburetor

## Performance 2-Stroke Parts

### HIGH PERFORMANCE CNC HEAD **\$49.99**

These performance upgrade parts for Zeda80 2-stroke engine kits are CNC machined from billet aluminum and offer improved cooling which can improve performance 20-30% and extended engine life. Designed for use with the Firestorm Zeda 80 & PK80 but can be used on most 66-80cc 2 stroke bicycle engine.

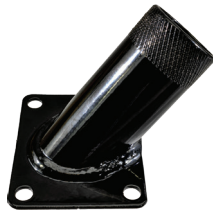
ITEM: ENGLJL-CH (round), ENGLJL-CNCSQS (square)



### DIO KIT OFFSET ANGLED INTAKE **\$29.99**

This custom intake allows the carb and air filter to be positioned more in-line with your bike reducing pedal interference. Compatible with our DIO kit OKO carburetor.

ITEM: ENG2S-DIOINT



### ZEDA88 PERFORMANCE PIPE **\$69.99**

Performance upgrade for Zeda80 2-stroke engine kits. Enhances power output. Includes mounting hardware.

ITEM: ENGLJL-EXP



### DUAL WINDOW PISTON KIT **\$24.99**

Windowed pistons allow trapped fuel to escape from underneath the piston changing the transfer sooner, providing more power and efficiency, and keeping your engine cooler and running longer.

ITEM: ENGLJL-PKWDW



### FLEX FIT MOTO-X PIPE **\$49.99**

This muffler was not only designed to enhance the looks of your motorized bike but to also increase your 2 stroke engines performance, giving you more torque at low revs while offering a mild amount of sound reduction. The stainless-steel flexible hose makes this exhaust quick and simple to install on most engine kits and versatile enough to fit in almost any configuration on your bicycle.

ITEM: ENGLJL-PPMC



### UPGRADED 2-STROKE CDI **\$19.99**

Maintain a consistent high-energy spark to the spark plug. Fuel burns more cleanly improving performance.

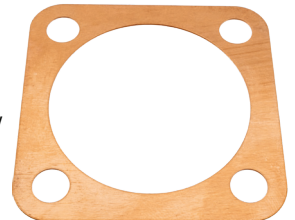
ITEM: ENGLJL-CDI



### COPPER HEAD GASKET **\$6.99**

Helps prevent leaks that rob performance and offers higher durability which increases resistance to blowouts and minimizes warping.

ITEM: ENGLJL-CPHG



### T-BELT DRIVE CONVERSION KIT **\$119.99**

Easily convert your chain driven 2-stroke engine kit to a low maintenance, no mess, lightweight, nearly silent t-belt drive. The T belt has the advantage of putting down the torque of the engine much more smoothly and gradually than the chain drive counterpart.

ITEM: ENGLJL-TBELTKIT



For more information call 406-586-5970 or live chat at [www.Bicycle-Engines.com](http://www.Bicycle-Engines.com)



# 2-Stroke Parts

## ZEDA DIO UPGRADE KIT

**\$99.99**

Greatly enhance your existing Zeda80 engine with this performance Dio upgrade kit. Complete add on performance kit includes: Modified Dio cylinder, OKO flat side carb, 6 flap Dio reed valve, & K&N style air filter.

ITEM: ENGJL-DIOKIT



## OKO CARB FOAM AIR FILTER

**\$10.99**

This foam air filter for the OKO Performance carb provides increased air flow improving the combustion process and increasing maximum power and peak torque output for your engine.

ITEM: ENGJL-STN



## TUNABLE CNS CARBURETOR V2

**\$24.99**

Redesigned CNS carburetor with improved angle for the fuel line. Features include a choke housing that utilizes a cable from the handle bars to engage/disengage (not included). Idle adjustment and air flow adjustment allow for optimal tuning - 47mm OD air filter intake.

ITEM: ENG2S-SKYC



## ENGINE MOUNT CHAIN TENSIONER

**\$26.99**

This chain tensioner mounts directly over the clutch cover on your 2-stroke engine. Featuring an adjustable spring-loaded design, this tensioner will maintain constant pressure for your engine drive chain.

ITEM: ENGJL-RCCT



## Z INTAKE MANIFOLD

**\$6.99**

The Z Intake Manifold allows for an offset carburetor placement. Perfect for larger carburetors or for fitting on a bike frame that would be non-compatible with a normal manifold.

ITEM: ENG2S66-OSZI



## BLACK CAT MUFFLER

**\$34.99**

Upgrade your muffler or switch to one with an aesthetic that matches your bike.

ITEM: 2S-FE-BLACKCAT



## PULL START CONVERSION KIT

**\$19.99**

Replace your stock magneto cover with this kit to instantly convert your Zeda80 engine into a pull start motor.

ITEM: ENGJL-Z80PS

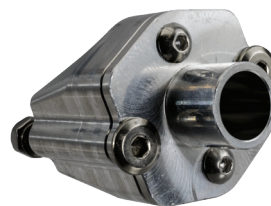


## OZ REED VALVE

**\$49.99**

Performance upgrade for Firestorm Zeda80 2-stroke engine kits. 19mm intake manifold. Carbon fiber reeds. Aluminum housing.

ITEM: ENGJL-OZRV



## OKO CARB VELOCITY STACK

**\$12.99**

Velocity stacks allow smooth and even entry of air at high velocities into the intake, increasing power in the order of 2% to 4%. Choose from 5 colors: Silver, Blue, Grey, Red, and Yellow. Recommended for racing use only.

ITEM: ENGJL-VS



## TUNABLE CNS CARBURETOR

**\$29.99**

This adjustable carburetor features a choke that can be engaged from the handle bars. Redesigned with an optimized angle for the fuel line and will also accept after market 32mm OD air cleaners.

ITEM: ENGJL-KCRB2



## LOW HANG CHROME MUFFLER

**\$19.99**

With this low hand muffler a 2-stroke engine kit hangs tight under the bike for better clearance and has a removable baffle for more performance. Includes muffler gasket.

ITEM: ENG2S66-13LEM

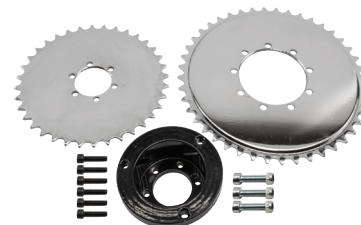


## MAG WHEEL ADAPTER KIT

**\$24.99**

The Mag Wheel Adapter Kit makes installing and aligning the rear drive sprocket quick and easy. Choose from two rear sprocket sizes: 36 or 44 tooth.

ITEM: ENGJL-AK36/44T

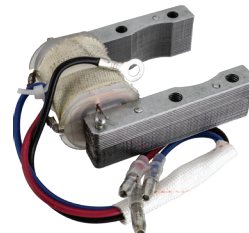


## 12 VOLT MAGNETO STATOR COIL

**\$16.99**

Standard magneto coil with additional 12V accessory wire allowing you to power headlights, blinkers, etc.

ITEM: ENGJL-12VMAG



## THUMB CLUTCH LEVER W/BRAKE

**\$19.99**

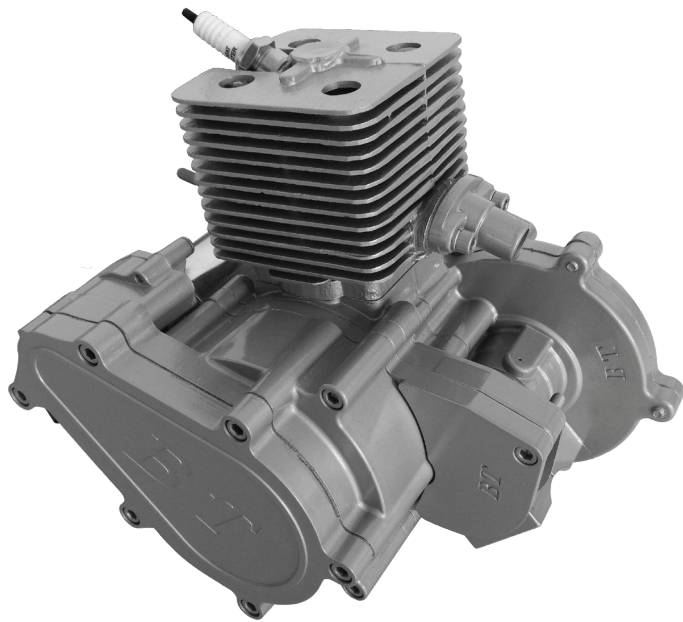
Deluxe integrated thumb clutch lever and brake lever with push button lock and release.

ITEM: ENG2S66-CBL





# Electric Start 2-Stroke Complete Kit



## E-STORM V2

80cc 2-STROKE KIT

**\$269.99**

**Electric  
Start!**



### KIT INCLUDES:

- BT80 2-Stroke 80cc/66cc Engine
- 2.0+ HP @ 6000 RPM
- 0.5 Gallon Black Fuel Tank
- 44Tooth, 9 Hole Chrome Sprocket
- Standard Sprocket Attachment Kit
- Push Button Electric Starter
- Twist Throttle With Engine Kill Switch
- Improved Gas Valve and Gas Filter
- Standard Ball Bearing Chain Tensioner
- Standard NT Carburetor
- Battery Box - Battery NOT included
- CDI, and all Electrical Wiring
- 415 Heavy Duty Chain & Chain Guard
- All mounting brackets, gaskets, hardware
- Wide frame mounting kit for large down tube bikes
- 6-Month Limited Warranty Included - FREE

## Electric Start 2-Stroke Replacement Parts

### THROTTLE SWITCH **\$14.99**

Standard OEM replacement part.

ITEM: ENGJL-BT-TSWTCH



### OUTER ROTOR **\$24.99**

Standard OEM replacement part.

ITEM: ENGJL-BT-ORTR



### CYLINDER BODY **\$39.99**

Standard OEM replacement part.

ITEM: ENGJL-BT-CYLB



### GENERATOR COIL **\$24.99**

Standard OEM replacement part.

ITEM: ENGJL-BT-GC



### CHROME MUFFLER **\$24.99**

Standard OEM replacement part.

ITEM: ENGJL-BT-MUFF



### THROTTLE GRIP SET **\$19.99**

Standard OEM replacement part.

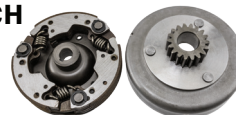
ITEM: ENGJL-BT-THGRP



### AUTOMATIC CLUTCH **\$29.99**

Standard OEM replacement part.

ITEM: ENGJL-BT-AC



### MOUNTING BRACKETS **\$4.99**

Standard OEM replacement part.

ITEM: ENGJL-BT-ENGMB



### STARTING MOTOR **\$39.99**

Standard OEM replacement part.

ITEM: ENGJL-BT-STRTM



### STARTING RELAY **\$14.99**

Standard OEM replacement part.

ITEM: ENGJL-BT-STRTR



### BT80 CDI **\$19.99**

Standard OEM replacement part.

ITEM: ENGJL-BT-CDI



### VOLTAGE REGULATOR **\$14.99**

Standard OEM replacement part.

ITEM: ENGJL-BT-VR



### BT80 SPARK PLUG **\$4.99**

Standard OEM replacement part.

ITEM: ENGJL-BT-SP



### PISTON RING SET **\$4.99**

Standard OEM replacement part.

ITEM: ENGJL-BT-PSTNR



### BT80 PISTON **\$11.99**

Standard OEM replacement part.

ITEM: ENGJL-BT-PSTN



More parts & accessories available at [www.Bicycle-Engines.com](http://www.Bicycle-Engines.com)



# Complete Bikes, Frames, & Bike Parts

## ZEDA DAWN CRUISER 26" ENGINE READY COMPLETE BICYCLE \$499.99

ITEM: ENGJL-ZDBIKE

### BIKE FEATURES:

Antique, retro styled, heavy duty cruiser frame – Felt™ style replica  
Built in 3.4 L (0.89 gal) gas tank  
Single crown front fork with lockable suspension  
26 Inch spoked wheels with 26x2.35 cross country tires  
160mm Front disc brake, with rear coaster brake  
Includes 48T chain ring with 16T single speed sprocket (pre-installed)  
Center kickstand, pedals, stem, 24.5 in. flat handlebars, saddle, and seat post



Available in 7 colors 

## SCREAMING DEMON V2 26" ENGINE READY COMPLETE BICYCLE \$499.99

ITEM: ENGJL-AB

### BIKE FEATURES:

26" heavy duty frame designed specifically for gas engine applications.  
Built in 3.74L (0.99 gal) gas tank  
Pedestal mount for Zeda 2-stroke engines  
Single crown front fork with suspension  
26 x 1.95" Kenda tires on 26" 6-spoke Mag wheels  
Front disc brake, with side pull caliper rear brake  
Dual drive rear wheel - 22T freewheel pedal side, 44T engine drive side  
1-Piece crank with 44T chain ring  
Center kickstand, pedals, stem, flat handlebars, saddle and seat post included

## 26" GTA BICYCLE ENGINE FRAME \$119.99

26" heavy duty aluminum frame designed specifically for 2 or 4-stroke gas engine applications. Includes built in 2.4L gas tank, complete thread-less headset, large bottom bracket for 1 piece cranks, 150mm rear drop out. Specially designed to align front and rear engine chain sprockets and to allow mounting of V-caliper rear brakes and HD axle kits.

ITEM: FA150-26FRAME



2-Stroke Pedestal Mount  
Rubber Ride Cushion

## MAG WHEEL SET \$129.99

Get your motorized bike looking sharp with a set of HY-27 style 26" CNC magnesium/aluminum alloy mags. Includes front and rear mag wheels. Suitable for use with motorized bicycles that have a 135 mm rear dropout. Available in 3 colors: black, blue, & green.

ITEM: ENGJL-SMAGSET



  
Black Blue Green

## TRIPLE TREE FRONT FORK \$49.99

Whether you need to replace a damaged fork or are looking for a stylish replacement, you will be satisfied with our non-suspension triple tree bicycle fork. Clamp for head tube and forks included. Built to fit a men's 26" bicycle frame.

ITEM: ENGJL-SFRK



## SPRINGER FRONT FORK \$89.99

This heavy-duty springer bicycle fork features a large front facing spring ready to absorb those hard bumps along with adding a slick vintage look for beach cruisers and chopper bicycles. Designed to fit most 26-inch cruiser or chopper style bikes that use a 1 inch threaded headset.

ITEM: ENGJL-SF



More parts & accessories available at [www.Bicycle-Engines.com](http://www.Bicycle-Engines.com)



# Universal Accessories

## ALUMINUM TWIST THROTTLE KIT \$19.99

Standard billet aluminum twist throttle with cable set and matching left hand grip. Mounts to any standard handlebar assembly. Includes built-in kill switch.

ITEM: ENG2S66-THKS



## REAR MOUNT GAS TANK \$49.99

Available in black or chrome this gas tank easily clamps to your seat post! Designed with 25° rise so that it's always positioned to allow the best possible fuel flow and to also clear the rear tire. Fuel valve and extra long fuel line required, sold separately.

ITEM: ENGJL-RBGAS



## HEADLIGHT & TAIL LIGHT KIT \$19.99

Removable flashlight headlight and tail light with multiple settings. Includes headlight, tail light, and mounts. Requires 5x AAA batteries, not included.

ITEM: ENGJL-HDTLIGHT



## RETRO LED HEADLAMP \$29.99

This is one accessory that could save your life! Headlights are a must for protecting yourself, and look good doing it, with our Retro Black and Copper Headlamp. 2x AA batteries required.

ITEM: ENGJL-RLHLC



## COWHIDE SADDLE SEAT \$39.99

Naturally, being a business that is based in Montana, we felt we should offer some down home comfort! You can be assured of a long life from this Saddle Seat as it has been made from real cowhide!

ITEM: ENGJL-SSB



## REAR VIEW MIRROR SET \$11.99

Right and left rear view mirror set.

ITEM: ENGJL-RM



## COLORLED VALVE STEM CAPS \$1.99

Make your bicycle wheels stand out by replacing the old dreary black plastic tire valve caps with new durable anodized aluminum caps.

ITEM: ENGMI-VC (Black, Blue, Red, or Silver)



## ALUMINUM HANDLEBAR \$29.99

This handlebar is built for ultimate performance and is sturdy enough for any rider to enjoy. Available in 4 different color options. Bar clamp diameter: 1.125".

ITEM: ENGJL-CHB\*  
\*Black, Blue, Red, Silver



## BLACK RUBBER HANDLEBAR GRIPS \$9.99

Increase your comfort and control with these grippy ridged pattern rubber bike grips. The rubber compound is lightweight, cushioned and super-durable. 4.75 inches long.

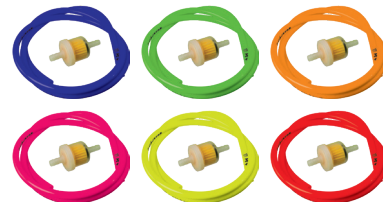
ITEM: ENGJL-TBBBL



## COLORLED FUEL LINE \$5.99

These brightly colored fuel lines are extra long - 40 inches - perfect for custom bike builds or rear mount gas tanks. Available in blue, green, orange, pink, red, and yellow. Includes magnetic fuel filter.

ITEM: ENGJL-CPWF(specify color)



## TURN SIGNAL & TAIL LIGHT KIT \$14.99

Enhance your safety and let everyone else on the road know where you are going with this battery powered turn signal and brake light kit. Requires 2x AA batteries, sold separately.

ITEM: ENGJL-TL



## DIGITAL SPEEDOMETER & ODOMETER \$11.99

Digital Speedometer measures - in Miles or Km - your current speed, trip, distance, odometer, max speed, average speed, elapsed time. Also features a 12/24 hour clock.

ITEM: ENGJL-SPDMTR



## REAR MOUNT BIKE RACK \$24.99

Rear mounted lightweight, steel bicycle rack mounts above a 26" rear bicycle wheel to help easily transport bags, panniers, cargo baskets and more. Each rack features a reflector bracket and spring loaded flap to secure cargo.

ITEM: ENGJL-RR2



## MID-FRAME KICKSTAND \$24.99

Mid frame kickstand for 26" bikes.

ITEM: 24S-ACC-MFKS



## REPLACEMENT BRAKE PADS \$8.99

60mm High grade bicycle rim brake pads built with a durable, all-weather compound. Each kit includes 2 - brake pads with bushings and nut.

ITEM: ENGJL-BP



## HD AXLE KIT WITH BRAKE \$49.99

This hub kit includes a 36T, 44T, or 50T solid sprocket, 36 spoke heavy duty hub, 195mm axle, mounting hardware, and drum brake.

ITEM: ENG2S66-HDRA\*  
\*36T, 44T, or 56T

